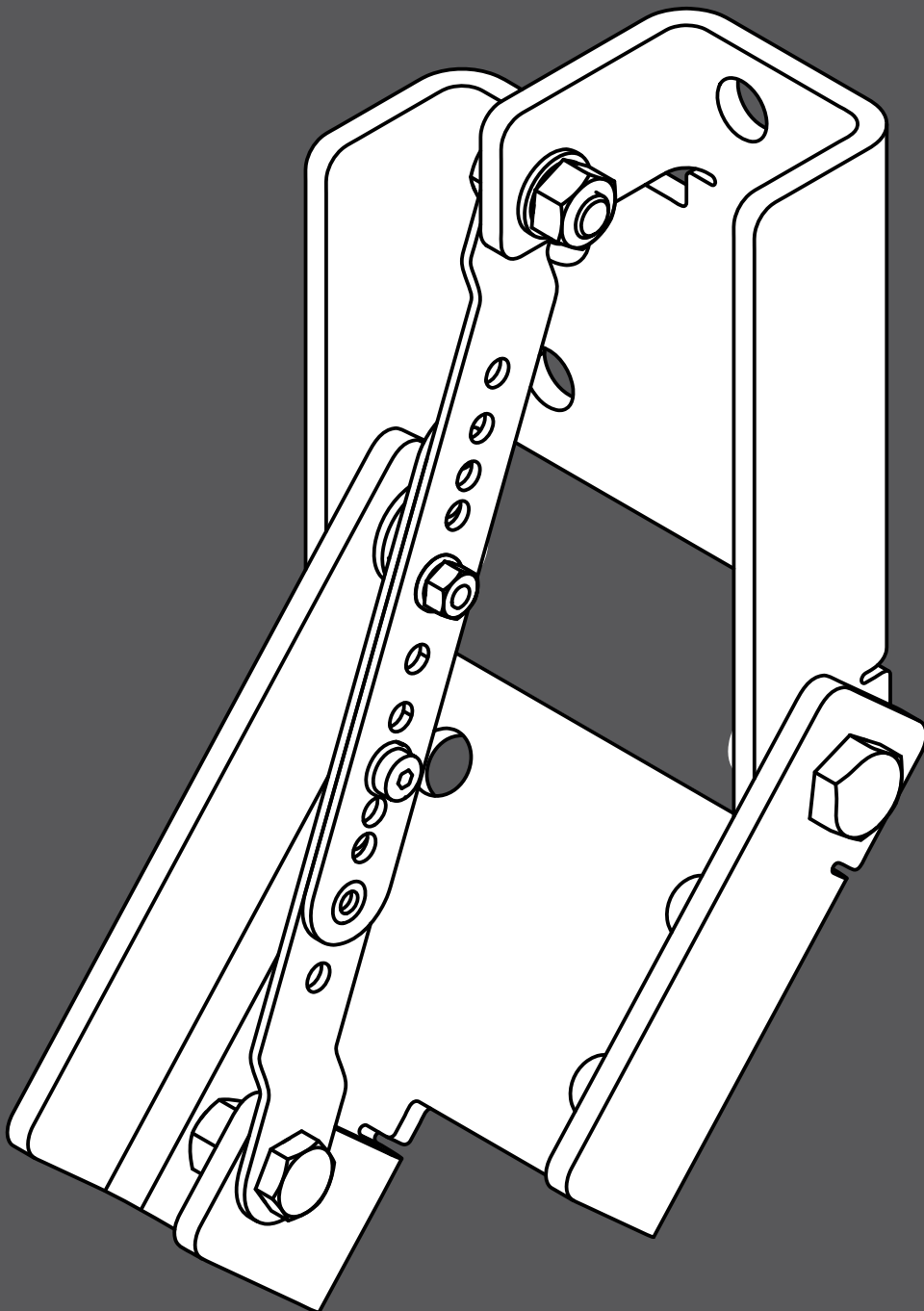


Z

Z5552 Mounting instructions 1.1 en



General information

Z5552 Mounting instructions

Version: 1.1 en, 04/2020, D2631.EN .01

Copyright © 2020 by d&b audiotechnik GmbH & Co. KG; all rights reserved.

Keep this document with the product or in a safe place so that it is available for future reference.

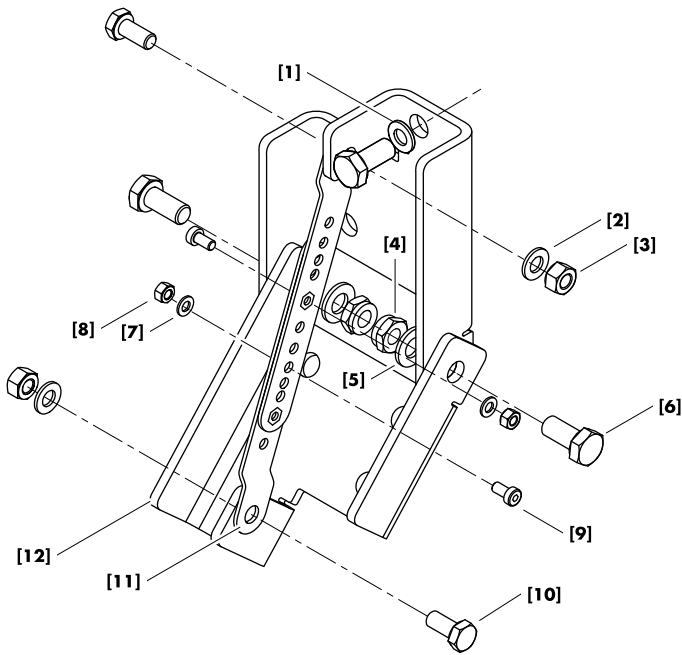
We recommend you to regularly check the d&b website for the latest version of this document.

When reselling this product, hand over this document to the new owner.

d&b audiotechnik GmbH & Co. KG
Eugen-Adolff-Str. 134, D-71522 Backnang, Germany
T +49-7191-9669-0, F +49-7191-95 00 00
docadmin@dbaudio.com, www.dbaudio.com

1	Z5552 Bracket connector	4
1.1	Scope of supply and weight	4
1.2	Safety precautions	4
1.3	Intended use	5
1.4	Angle settings	5
1.5	Assembly	6
2	Manufacturer's declaration	7
2.1	EU conformity (CE symbol)	7
2.2	Disposal	7

1 Z5552 Bracket connector



Scope of supply

1.1 Scope of supply and weight

Please verify the shipment for completeness and proper condition of the items.

Pos.	Qty.	d&b Code	Description
	1	Z5552	Bracket connector
including:			
[1]	8		Spring washer
[2]	2		U washer 8.4
[3]	2		Self-securing nut M8
[4]	2		Self-securing nut M10
[5]	18		U washer 10.5
[6]	10		Hex head bolt M10 x 25
[7]	2		U washer 5.3
[8]	2		Self-securing nut M5
[9]	2		Hex socket screw M5 x 16
[10]	2		Hex head bolt M8 x 18
[11]	2		Angle connector
[12]	2		Bracket connector
	1	D2631.EN .01	Z5552 Mounting instructions

Weight 2 kg (4.4 lb)

1.2 Safety precautions

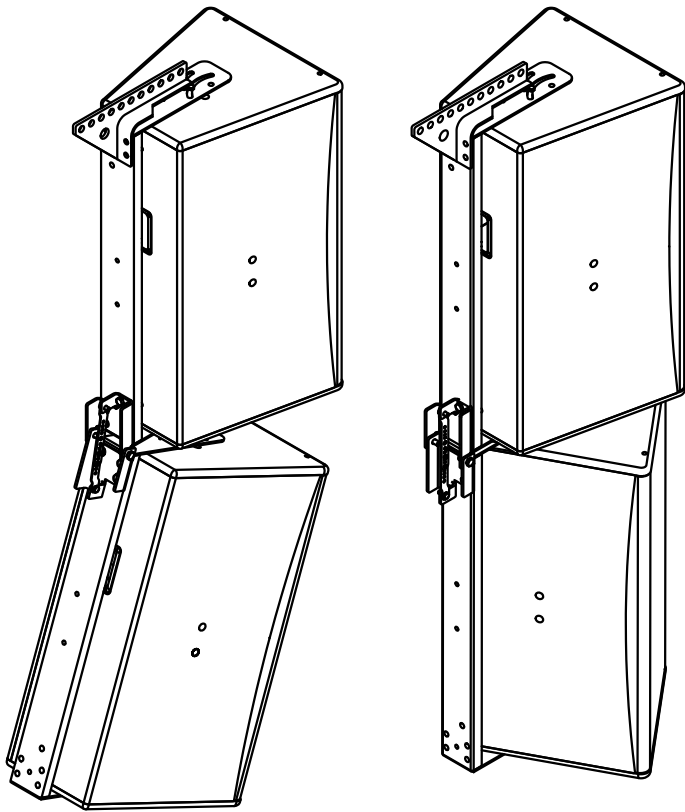
General safety

- Installation and setup should only be carried out by qualified and authorized personnel observing the valid national Rules for the Prevention of Accidents (RPA).
- It is the responsibility of the person installing the assembly to ensure that the suspension/fixing points are suitable for the intended use.
- Always carry out a visual and functional inspection of the items before use. In case there is any doubt as to the proper functioning and safety of the items, these must be withdrawn from use immediately.

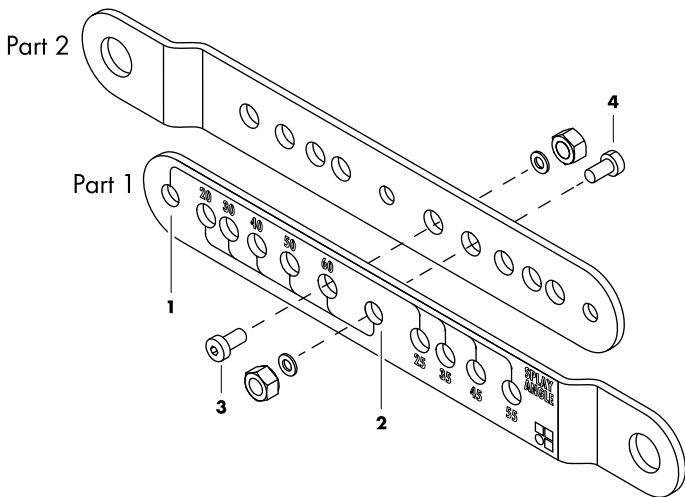
Load safety information

The maximum permitted safe working load of the bracket connector is 35 kg / 77.2 lb. This value must not be exceeded under any circumstances. The bracket is designed to support the following loudspeakers:

- 24S
- V7P/V10P
- Vi7P/Vi10P
- Y7P/Y10P
- Yi7P/Yi10P



Intended use



Example of 60° setting on the angle connector

1.3 Intended use

The bracket connector must only be used to connect two horizontal brackets, e.g. Z5388 VP Horizontal bracket, as described in these mounting instructions.

The bracket connector can be:

- flown using the Z5054 Flying adapter with variable vertical and horizontal alignments.
- mounted to overhead bars or truss using:
 - Z5012 Pipe clamp in conjunction with Z5015 TV spigot.
 - Z5147 Rota clamp

Note: For assembly and operation of these accessories, refer to the specific mounting instructions.

1.4 Angle settings

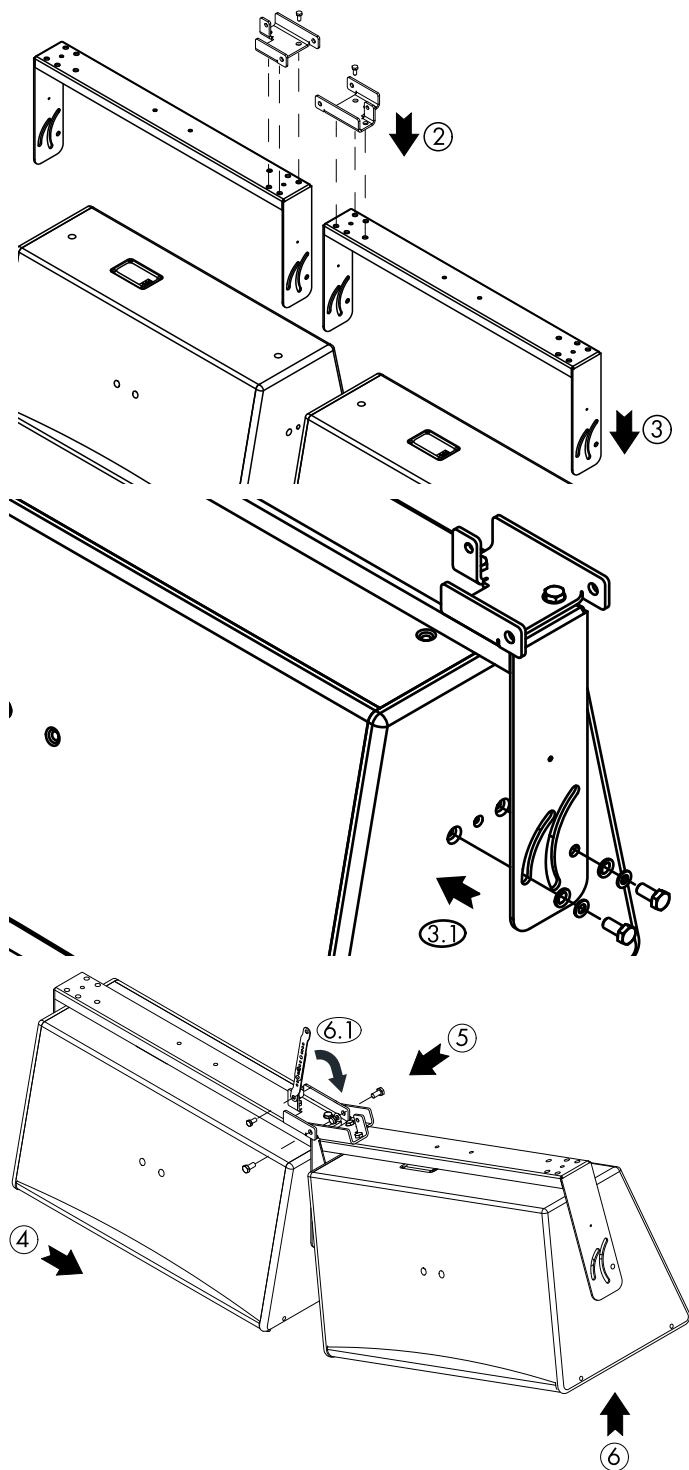
The angle connector consists of two parts and is used to set different angles for an array. Angles can be set in steps of ten in the range from 20° to 50° and from 25° to 55°. As shown in the graphic opposite, positions **[1]** and **[2]** on the angle connector parts are the master holes for the *uneven* or the *even* angles.

Angle settings

To set an angle on the angle connector, proceed as follows:

1. Choose an angle according to your system requirements.
2. Insert screw **[3]** into the desired angle hole on part 1 of the angle connector.
3. Take part 1 with screw **[3]** and screw it into master hole **[1]** or **[2]** of part 2 of the angle connector for either *even* **[2]** or *uneven* **[1]** angles (depending on your angle selection).
 - ↳ Handtighten the screw.
4. On part 2 of the angle connector, insert screw **[4]** into the same angle hole you selected in step 2. This angle hole corresponds to one of the two master holes of the other part.
 - ↳ Handtighten the screw.

Both parts of the angle connector now show the same hole pattern.



Assembly of the Bracket connector

1.5 Assembly

Screw	Torque
[6] Hex head bolt M10 x 25	50 N·m
[3] Hex head bolt M8 x 18	15 N·m
[8] Allen hex screw M5 x 16	2.5 N·m

Note: In order to prevent any damage to the cabinet surface, place the cabinets on soft ground.

To connect two cabinets with the bracket connector, proceed as follows:

Tools required: Hex key 4mm

1. Place the cabinets side by side on the floor with the front facing downwards. Ensure that the HF sections are correctly aligned to each other.
2. Attach the two U-shaped parts **[12]** of the bracket connector to the horizontal brackets using the hex head bolts M10 x 25.
3. Attach the horizontal brackets to the cabinets, as shown in the graphic opposite. For more detailed mounting instructions, refer to the manual of the horizontal brackets used.
4. Push the two cabinets together until the two parts of the bracket connector are aligned.
5. Screw the two parts of the bracket connector together using the hex head bolts M10 x 25 but do not tighten the bolts yet.
6. Lift one cabinet up to connect the two parts of the bracket connector using the preset angle connector (for more information on how to set an angle, see ⇒ "Angle settings" on page 5).
7. Tighten the screws M10 x 25 mentioned in step 5 to the specified torque.



2.1 EU conformity (CE symbol)

This declaration applies to:

d&b Z5552 Bracket connector

by d&b audiotechnik GmbH & Co. KG.

All product variants are included, provided they correspond to the original technical version and have not been subject to any later design or electromechanical modifications.

We herewith declare that said products are in conformity with the provisions of the respective EC directives including all applicable amendments.

A detailed declaration is available on request and can be ordered from d&b or downloaded from the d&b website at www.dbaudio.com.

2.2 Disposal

When out of use the rigging components must be disposed of in accordance with the national environmental regulations.

Ensure that damaged rigging components are disposed of in a way that they cannot be used again.

